



## Setting up Star TSP 113 / 143 Receipt Printers and Cash Drawers

### Overview

The Star TSP100 “Future Print” is an updated thermal receipt printer with USB connections instead of the old Parallel connection. There are two models, one with a tear bar (TSP113), and one with an automatic paper-cutter (TSP 143). You should know what model you have before getting started.

This printer must be connected to a machine and the printer driver installed, and selected in Visual Anthology.

### Prepare to install the driver

**IMPORTANT:** Before continuing you must do the following:

- 1) Receipt printer is connected to the power outlet, but do not turn it on yet. This is important.
- 2) The receipt printer is connected to the computer via a USB cable. You must connect this to the port where it will normally be connected. You cannot install with the printer connected to one USB port, then switch the cable to another later on or windows will not recognize the change.
- 3) Receipt printer has fresh paper roll, not small test roll they come with.
- 4) You have the installation cd that came with the printer in the cd rom drive of the computer
- 5) The Cash Drawer and Receipt printer are connected via the cash drawer cable. This cable has two different size connectors. One end of this cable is the size of a phone jack, while the other larger end is the size of a network cable. Without this cable the cash drawer will not open!

### Installing the driver

Once the printer is ready:

- Turn printer on. Windows will normally recognize the new USB connection and begin searching for the drivers. If asked, tell the prompt to search the cd rom drive.

Your Star TSP100 series printer has now been installed, now we need to make changes to the properties of the printer. On most systems, you would go to Start | Control Panel | Printers, however it can vary from system to system.

If you do not see the new printer displayed, you may wish to shut down the printer, unplug the USB cable, and reboot the computer. Begin with the steps under “Prepare to install the driver” again. If you encounter problems installing the drive contact Star Micronics at (800) 782-7636. Once you have the driver successfully installed refer to the next section entitled “Configuring the driver settings”.

## Configuring the driver settings

Configuring the driver entails setting the paper type to be receipt, and setting the cash drawer to open.



You want to right mouse click on the Star TSP100, Star113, or Star143 printer icon. That will give you menu options; select Properties.

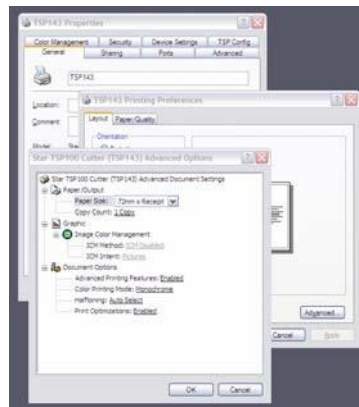
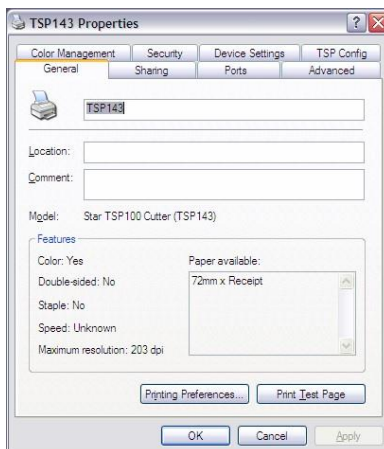
A new window will appear showing the properties of this printer [driver]. At the top of the screen are several index tabs for the various options.

You will need to modify the various paper size settings. Listed below are the areas to click on in order to edit them. Following will be screen shots of the actual screens.

- General Tab | Printing Preferences Button | Advanced button | Paper Output, Paper Size= “72mm\*Receipt”
- Advanced Tab | Printing Defaults Button | Advanced button | Paper Output, Paper Size= “72mm\*Receipt”
- Device Settings Tab | Paper to Tray Assignment | Friction, “72mm \* Receipt”.
- Device Settings Tab | Installable Options | Cash Drawer #1, “Open Before Printing”.

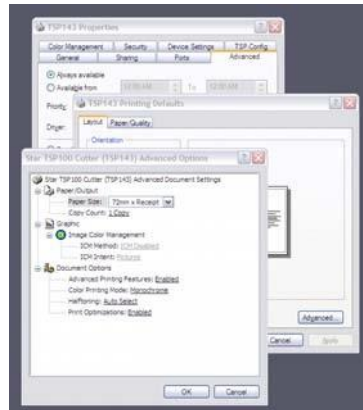
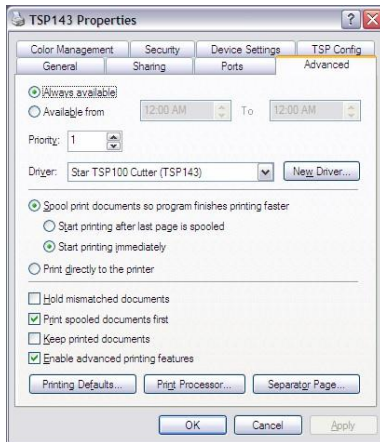
## Step by Step

1) Click on the General Tab, then the Printing Preferences button. A window called Printing Preferences opens. Click the Advanced button. Change the paper size setting to “72mm \* Receipt”.

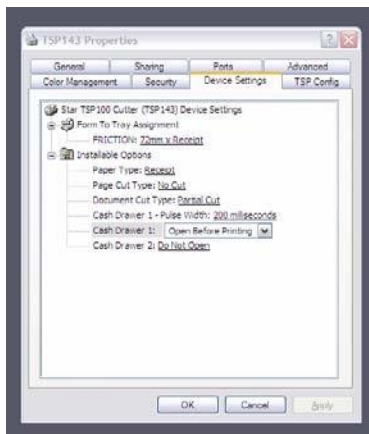


2) Click OK to close the Advanced printing preferences window, OK again to close printing preferences and return to the original properties window.

- 3) Click on the Advanced index tab, then the Printing Defaults button. A window called Printing Preferences opens. Click the Advanced button. Change the paper size setting to “72mm \* Receipt”. 4) Click OK to close the advanced printing preferences window, OK again to close printing preferences and return to the original properties window.



- 5) Next go to the Device Settings tab, change the form to tray assignment to “72 \* Receipt”.
- 6) On the Device Settings tab you’ll also set the drawer opening function. Set the Cash Drawer 1 option to “Open Before Printing”.



If you are using the TSP143 model, one with a paper cutter instead of a tear bar, you’ll need to do one final configuration. Follow the steps listed under the heading of “**Setting the Paper Cutter**” at the end of this document. Don’t forget to finish the test page and selecting your printer in Visual Anthology.

After the setup is complete, you will want to print out a test page. Go back to the General tab & click “Print Test Page.”

A test page should have printed out.

Once you have gotten a successful test page you will need to go to Anthology, then click on Master Files | Stations | General tab. Choose your Receipt printer and Report printer drivers here. Save changes and restart anthology.

That's It!

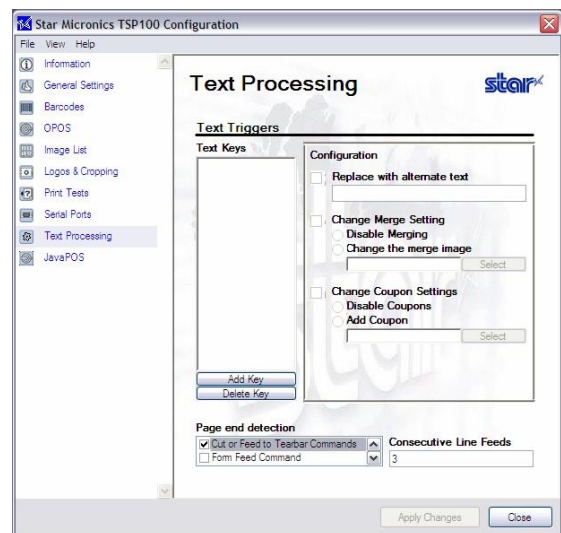
### Setting the paper cutter

The TSP143 printer has a paper cutter that will partially cut the receipt paper for you and the end of the receipt. To get the printer to cut the paper at the correct spot a setting needs to be changed.

With the printer properties open, go to the tab marked "TSP Config" and click the "Launch Configuration Application" button. This will bring up their configuration utility.



Click the "Text Processing" option on the left side of their screen. On the lower portion of the screen is an area labeled "Page End Detection". Make sure the option for "Cut or Feed to Tearbar Commands" is checked. Then click Apply Changes. Close application after that.



This will take you back to the properties of the printer. Don't forget to select your printer in Visual Anthology under Master Files | Stations | Details tab.